



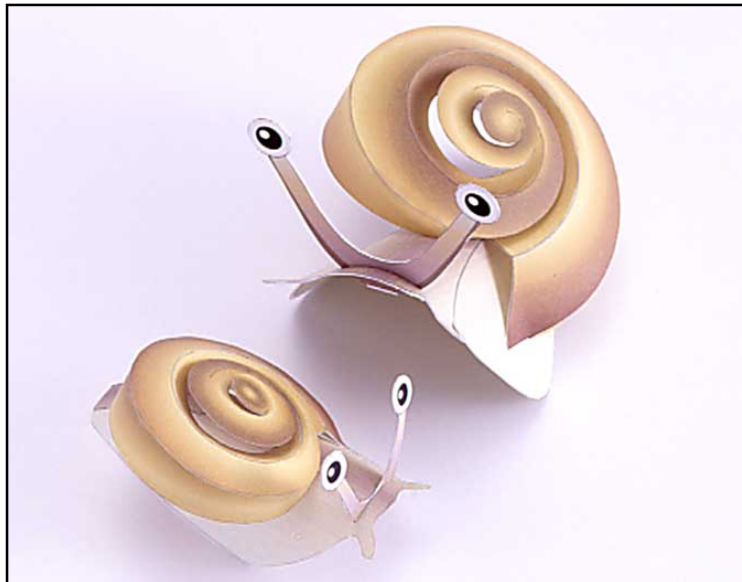
# THE SEASONS



Tsuyu  
“Snail”



## Assembly Instructions



Thank you for downloading this paper craft model of two Snails.

By following these instructions while referring to the names and numbers shown on the parts sheet, you can complete two paper craft snails. Why not try making this traditional Japanese paper craft with your whole family!

- Assembly instructions Three A4-sized sheets
- Paper craft: One A4-sized sheets with 10 parts in all

These instructions apply only to the "Snail".

These Paper Craft parts are easier to work with when printed out on strong, thick paper (like postcard stock).

\*In creating these Paper Craft models we use 135kg Kent paper stock (0.18mm).

# 1 To begin

## ■ Tools and materials needed

- Ruler - Scissors - Blade cutter or "Exacto-knife" - Awl or other pointed tool (for making a folding crease)
- Felt pen - Pin set - Glue - Hand towel

## ■ Items of Caution

- \* Take care when using sharp or pointed objects. When using bladed cutting tools, place a heavy sheet of paper under the paper you want to cut.
- \* Use glue and other adhesives only in well-ventilated areas.
- \* When printing, use a slightly reduced font size as there may be differences in dimensions depending on the type of printer used.

# 2 How to assemble

## ■ Cutting technique

- Follow carefully with the following working method and markings.
- Cut carefully along the outline with a cutting blade, Exacto-knife or scissors.

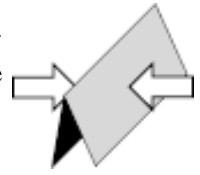
### One - point Advice

- Use caution when using a blade cutter.
- For folding parts, first use an awl or other pointed tool to make a light crease along the dotted or solid line. This will make the folds straight. Avoid making strong creases as this will cause the paper to tear.
- As an adhesive, white, wood glue is recommended. Avoid over-application as this will cause the paper to wrinkle.
- Before beginning assembly, test adhesive amounts on extra paper.
- Occasionally, white spots will be apparent on folds and cuts. Use a marker or pencil to fill in these spots. It is recommended that this be done after each stage of assembly because coloring becomes more difficult once parts are assembled.

## ■ Basic working method and markings

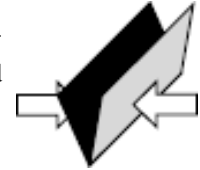
————— (Solid lines)

Fold along these lines. The printed surface should be on the outside of the folded shape.



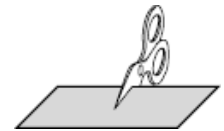
- - - - - (Dotted lines)

Fold along these lines. The printed surface should be on the inside of the folded shape.



▭ (White line)

Cut along these lines.

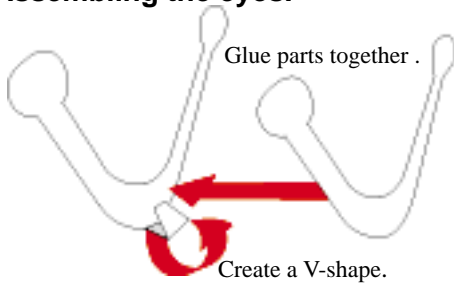


# 3 Assembly

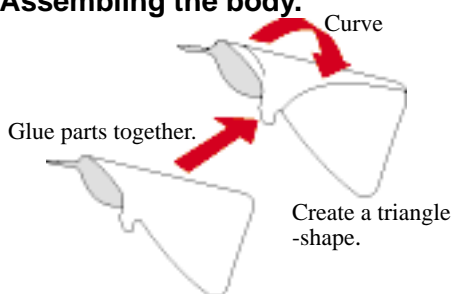
Please refer to the "Basic working method and markings" symbol chart.  
Once the parts are folded properly, begin gluing and insertion.

## Instructions

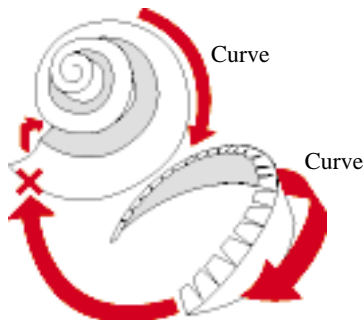
### Assembling the eyes.



### Assembling the body.

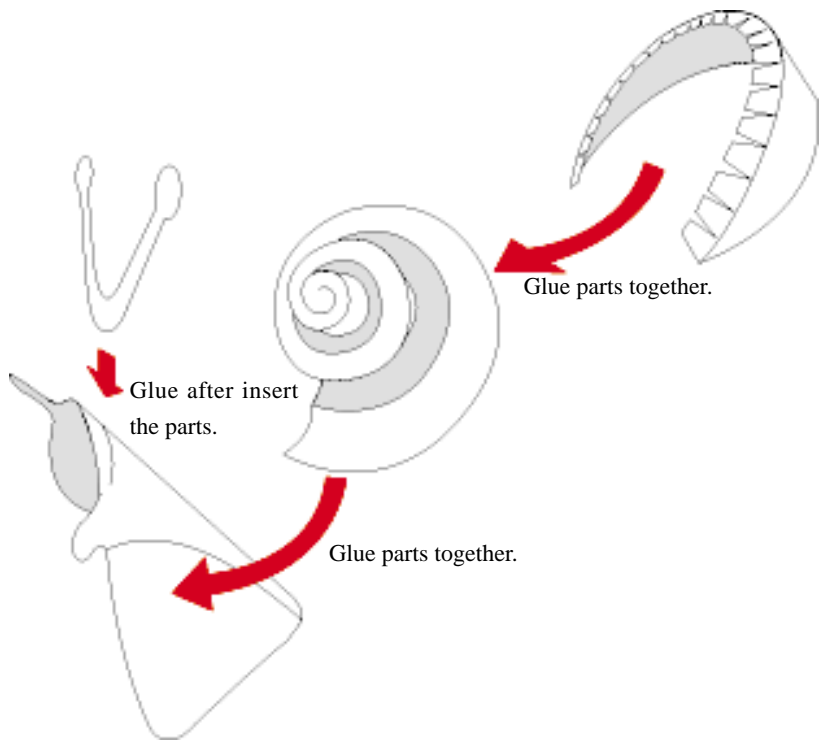


### Assembling the shell



Please start to glue from the position marked with an "X."

Please refer to this illustration for assembly.



Please make the small snail by the same procedure.

# 4 The Finished Model

The finished model



### What is "Tsuyu"?

As the rainy season hits, the Japanese Islands are completely drenched by rain from the end of Spring to the beginning of Summer. The plum fruits begin to ripen. This lingering, humid season is called, "Nyubai" or "Tsuyu," which means Plum Rain. The frogs in the mountains and fields croak their song joyfully. The snails enjoy their leisurely crawl over moist leaves of the Hydrangea. Soon after the rain stops, it is time to start riding about on your bike in the fresh wind and warm sun. Soon the summer will be here and you can enjoy all the marine sports!