

YK700XGP

Dust-proof & drip-proof type



- Arm length 700mm
- Maximum payload 20kg

Ordering method

YK700XGP		F		RCX340-4							
Model	Z axis stroke	Tool flange	Cable	Controller / Number of controllable axes	Safety standard	Option A (OP.A)	Option B (OP.B)	Option C (OP.C)	Option D (OP.D)	Option E (OP.E)	Absolute battery
	200: 200mm 400: 400mm	F: With tool flange	3L: 3.5m 5L: 5m 10L: 10m								

Specify various controller setting items. RCX340 ▶ **P.678**

Specifications

Axis specifications	Arm length	X-axis	Y-axis	Z-axis	R-axis
Rotation angle		300 mm	400 mm	200 mm	400 mm
AC servo motor output		+/-130 °	+/-150 °	-	+/-360 °
Deceleration mechanism	Transmission method	750 W	400 W	400 W	200 W
	Motor to speed reducer	Direct-coupled			
	Speed reducer to output	Direct-coupled			
Repeatability ^{Note 1}		+/-0.02 mm	+/-0.01 mm	+/-0.004 °	
Maximum speed		8.4 m/sec	2.3 m/sec	1.7 m/sec	920 °/sec
Maximum payload		20 kg			
Standard cycle time: with 2kg payload ^{Note 2}		0.52 sec			
R-axis tolerable moment of inertia ^{Note 3}		1.0 kgm ²			
Protection class ^{Note 4}		Equivalent to IP65 (IEC 60529)			
User wiring		0.2 sq × 20 wires			
User tubing (Outer diameter)		φ 6 × 3			
Travel limit		1.Soft limit 2.Mechanical stopper (X,Y,Z axis)			
Robot cable length		Standard: 3.5 m Option: 5 m, 10 m			
Weight		Z axis 200 mm: 54 kg Z axis 400 mm: 56 kg			

Note 1. This is the value at a constant ambient temperature. (X,Y axes)
 Note 2. When reciprocating 25mm in vertical direction and 300mm in horizontal direction (rough-positioning arch motion).
 Note 3. The acceleration coefficient is set automatically in accordance with the tip weight and R-axis moment of inertia settings.
 Note 4. Do not use robots where the bellows section is directly exposed to water jet. Contact our distributor for information on drip-proof structure preventing liquid other than water.

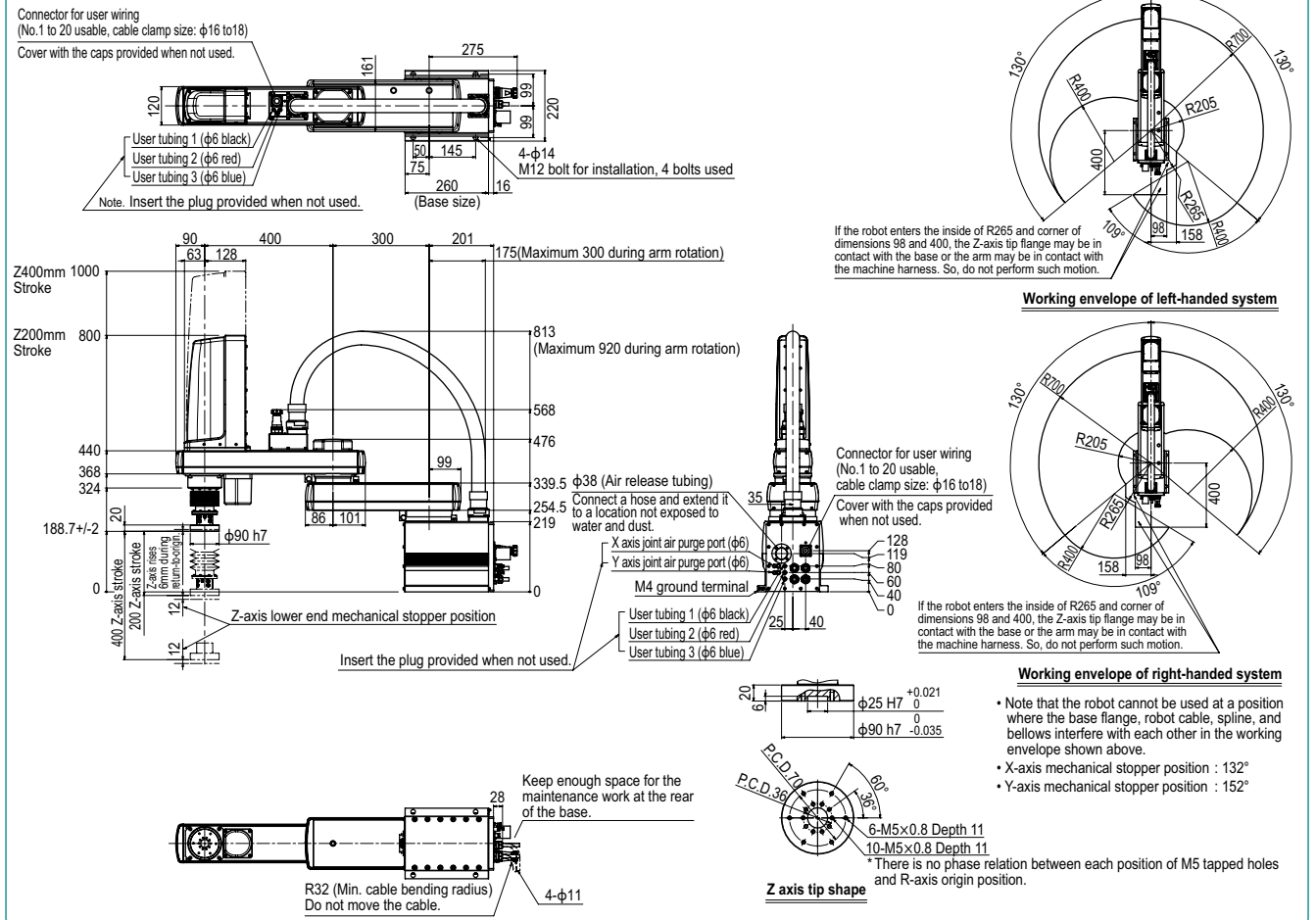
Controller

Controller	Power capacity (VA)	Operation method
RCX340	2500	Programming / I/O point trace / Remote command / Operation using RS-232C communication

Note. The movement range can be limited by changing the positions of X and Y axis mechanical stoppers. (The movement range is set to the maximum at the time of shipment.) See our robot manuals (installation manuals) for detailed information.
 Note. To set the standard coordinates with high accuracy, use a standard coordinate setting jig (option). Refer to the user's manual (installation manual) for more details.

Our robot manuals (installation manuals) can be downloaded from our website at the address below:
<https://global.yamaha-motor.com/business/robot/>

YK700XGP



Articulated robots YA
 Linear conveyor modules LCM
 Single-axis robots CX
 Motor-less single-axis actuator Robotomy
 Compact single-axis robots TRANSEVO
 Single-axis robots FLIP-X
 Linear motor single-axis robots PHASER
 Cartesian robots XY-X
 SCARA robots YK-X
 Pick & place robots YP-X
 CLEAN
 CONTROLLER INFORMATION
 Oht/Extra small type
 Small / Medium type
 Large type
 Wall mount / Inverse type
 Dust-proof & drip-proof type