

# SXYx 3 axes / ZS



- Arm type
- Cable carrier
- Z-axis shaft vertical type

## Ordering method

**SXYx - C** [ ] [ ] [ ] [ ] -15- [ ] **RCX340-3** [ ] [ ] [ ] [ ] [ ] [ ] [ ] [ ] [ ] [ ] [ ] [ ] [ ] [ ] [ ] [ ]

Model	Cable	Combination	X-axis stroke	Y-axis stroke	ZR-axis	Z-axis stroke	Cable	Controller / Number of controllable axes	Safety standard	Option A (OP.A)	Option B (OP.B)	Option C (OP.C)	Option D (OP.D)	Option E (OP.E)	Absolute battery
A1		A1	15 to 105cm	15 to 65cm	ZS12		3L: 3.5m								
A2		A2			ZS6		5L: 5m								
A3		A3					10L: 10m								
A4		A4													

Specify various controller setting items. RCX340 ▶ **P.678**

## Specification

	X-axis	Y-axis	Z-axis ZS12	Z-axis ZS6
<b>Axis construction</b> <small>Note 1</small>	F14H	F14		-
<b>AC servo motor output (W)</b>	200	100		60
<b>Repeatability</b> <small>Note 2</small> (mm)	+/-0.01	+/-0.01		+/-0.02
<b>Drive system</b>	Ball screw φ15	Ball screw φ15		Ball screw φ12
<b>Ball screw lead</b> <small>Note 3</small> (Deceleration ratio) (mm)	20	20	12	6
<b>Maximum speed</b> <small>Note 4</small> (mm/sec)	1200	1200	1000	500
<b>Moving range (mm)</b>	150 to 1050	150 to 650		150
<b>Robot cable length (m)</b>	Standard: 3.5 Option: 5, 10			

Note 1. Use caution that the flame machining (installation holes, tap holes) differs from single-axis robots.  
 Note 2. Positioning repeatability in one direction.  
 Note 3. Leads not listed in the catalog are also available. Contact us for details.  
 Note 4. When the X-axis stroke is longer than 750mm, resonance of the ball screw may occur depending on the operation conditions (critical speed). In this case, reduce the speed setting on the program by referring to the maximum speeds shown in the table below.

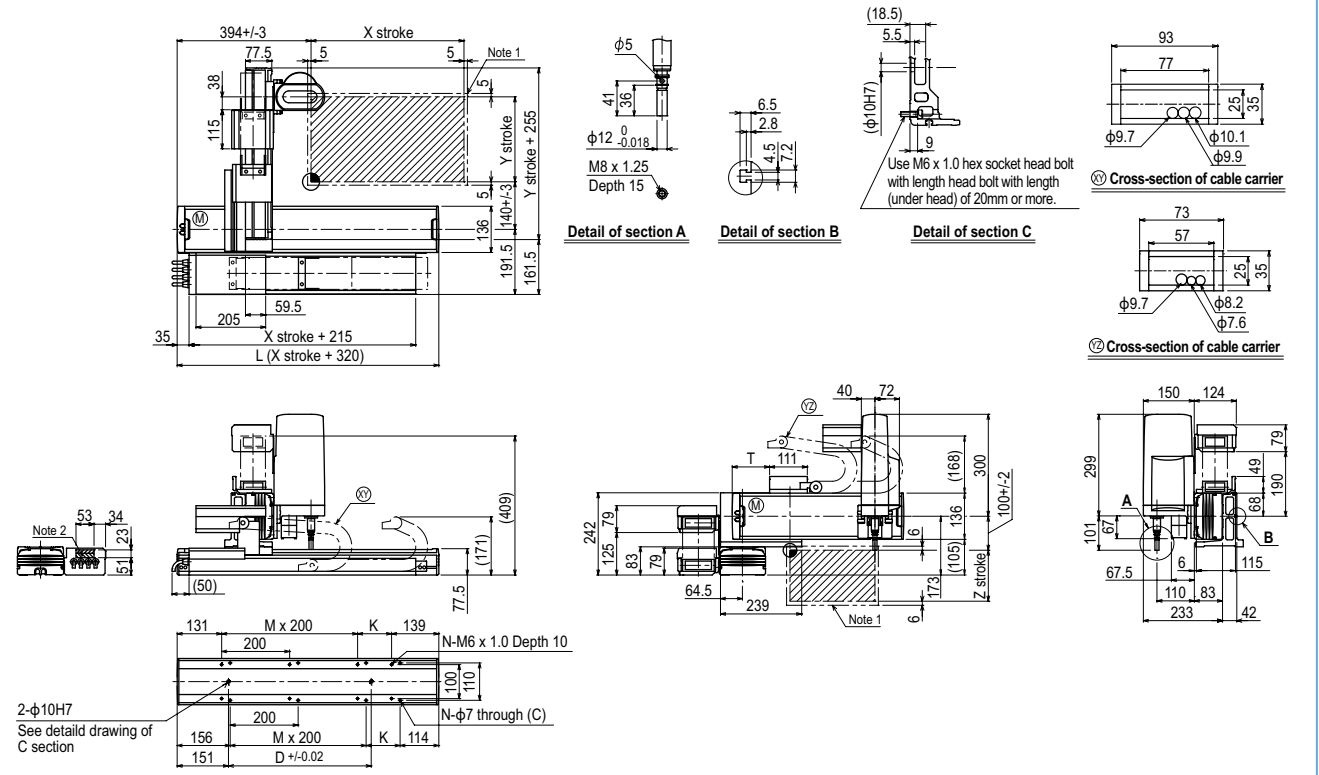
## Maximum payload (kg)

Y stroke (mm)	ZS12	ZS6
150 to 650	3	5

## Controller

Controller	Operation method
RCX340	Programming / I/O point trace / Remote command / Operation using RS-232C communication

## SXYx 3 axes / ZS (A1)



X stroke	150	250	350	450	550	650	750	850	950	1050
L	470	570	670	770	870	970	1070	1170	1270	1370
K	200	100	200	100	200	100	200	100	200	100
D	240	240	420	420	600	600	780	960	960	1140
M	0	1	1	2	2	3	3	4	4	5
N	4	6	6	8	8	10	10	12	12	14

Y stroke	150	250	350	450	550	650
T	55	110	165	215	270	325

Z stroke	150
	150

Maximum speed for each stroke (mm/sec) <small>Note 3</small>	X-axis					
Speed setting	-	1200	960	780	600	540
		-	80%	65%	50%	45%

Note 1. The moving range when returning to origin and the stop position when stopping by the mechanical stopper.  
 Note 2. The shaded position indicates a user cable extraction port.  
 Note 3. When the X-axis stroke is longer than 750mm, resonance of the ball screw may occur depending on the operation conditions (critical speed). In this case, reduce the speed setting on the program by referring to the maximum speeds shown in the table at the left.